




PAVITRA
Luxury Residences



DISCOVER LUXURY LIFESTYLE

At the vibrant edge of Zirakpur, nestled in the realm of fresh air arriving from the spots of surrounding green fields rests an area of 7+ acres (approx). Envisioned as Pavitra Luxury Residences — an eclectic mix of mid-rise and high-rise apartments towers erected to personify a lavish lifestyle that is desired by many but attained by few.

Stretch your imagination as far as your indulgence allows with spacious floor plans that encourage playfulness. Lull in the bliss of comfort as a collection of extravagant amenities and distinct finishings join hands together. Encounter positively rejuvenating emotions at Pavitra Luxury Residences — cosmopolitan apartments to provide your family with the best life experience in Zirakpur.



DISCOVER PAVITRA LUXURY RESIDENCES

Whether it is the marvelous architecture, the spacious floor plans, the vast cover of landscaped gardens, the application of the finest materials, the innovative Mivan construction technology*, or any of the countless qualities that result in a residential development of superior quality, Pavitra Luxury Residences comes to life with each desirable aspect sewn together in the tapestry of Zirakpur's real estate.

A SACRED EMOTION CALLED HOME

.....

The greatest joys of life are best experienced in your own abode. Ushering these great joys for you is Pavitra Luxury Residences – a sanctuary of happiness and safety for your family.

Through Pavitra Luxury Residences, discover the pure and positive emotions that will radiate from within you and your loved ones. Through Pavitra Luxury Residences, discover the true meaning of a sacred emotion called home.



*Architecture View

A QUICK OVERVIEW



Total Area: 7+ acres of prime land

Residential Towers: 11 beautifully designed towers

Unit Options: 3 & 2 BHK Luxury Residences & Sky Villas

Retail Spaces: Convenient shopping at your doorstep

Clubhouse: State-of-the-art facilities for leisure and wellness

Parking: Ample spaces across basement, stilt, and surface levels

Construction: Mivan technology for superior quality

Land Ownership: 100% owned land, ensuring peace of mind

Green Spaces: Approximately 30% lush greenery

RERA Registered: Compliance and transparency assured

Location: Prime connectivity and easy access to the highway

Kid's Play Areas: Safe and engaging spaces for children

Security: Advanced security systems for a safe living environment

Community Living: Thoughtfully designed for a vibrant experience

Discover the perfect blend of luxury, comfort,
and convenience at Pavitra Luxury Residences.



*Architecture View

A PEACEFUL
DEVELOPMENT TO
SHELTER YOU
FROM ALL EXTERNAL
CACOPHONY.

WITH THE PROMISE
OF A VIBRANT
ATMOSPHERE
TO WELCOME YOU
ON THE OUTSIDE.

AMENITIES



- Premium Clubhouse
- 24/7 Security
- Swimming Pool
- Gymnasium
- Multi-purpose Event Spaces
- Spa and Wellness Center
- Children's Play Area
- Indoor Playrooms
- High-Speed Elevators
- Lush Green Parks
- Pet Zone
- Yoga/Meditation Center
- Multi-purpose Sports Court
- High-Tech Security
- Automated Gate Entry
- Crèche / Daycare Facilities
- Drivers Dormitory
- EV Station
- Gas Pipeline
- 3 Tier Parking
- Auditorium
- Restaurant / Café
- Terrace Café
- Banquet Hall
- Guest Waiting Area



*Architecture View



NEARBY FACILITIES :

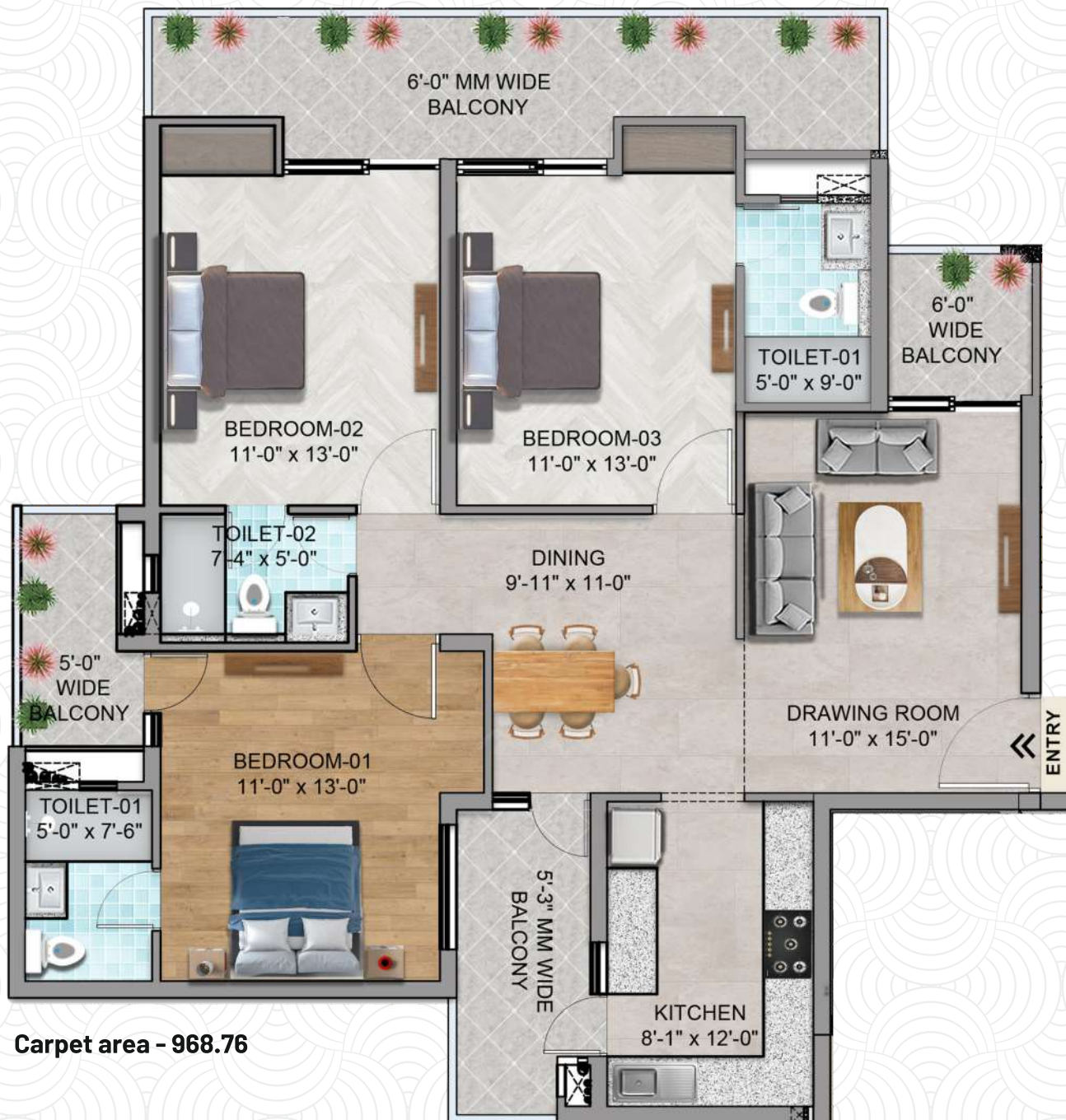
Radisson	01 Minute	JP Hospital	05 Minutes
Gopal Sweets	01 Minute	Walmart	10 Minutes
HP Petrol Pump	01 Minute	St Xaviers School	10 Minutes
HLP Social Square (Mall)	01 Minute	Elante Mall (Mall)	15 Minutes
Airport Road	02 Minutes	Mohali International Airport	15 Minutes
VIP Road	05 Minutes	Railway Station	15 Minutes



PAVITRA

Luxury Residences

UNIT PLAN 3 BHK (CATEGORY 1)



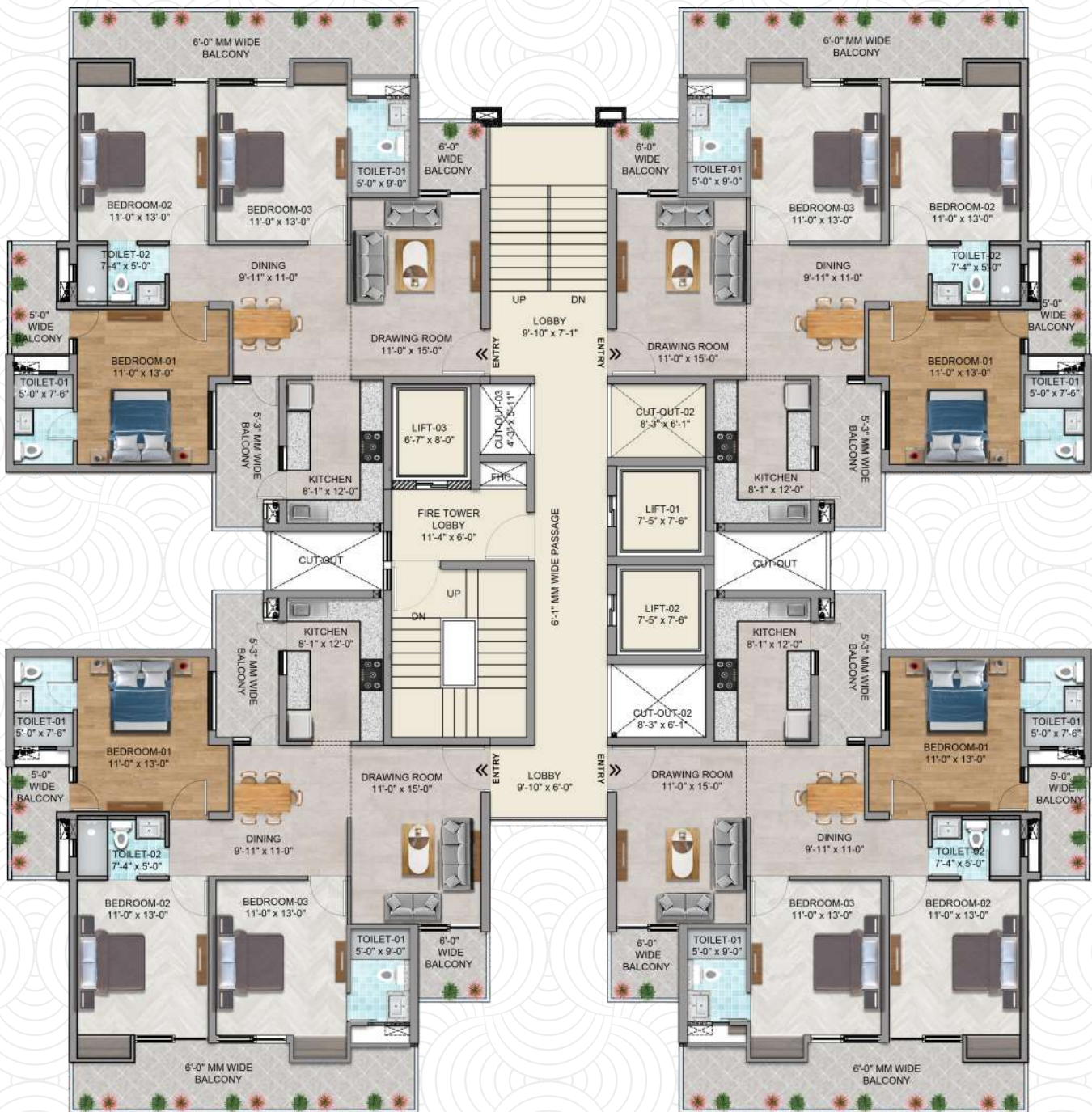
Disclaimer: Dimensions are approximate and the furniture, fixtures and interior items shown inside the layout are not the part of standard fittings and chargeable.



PAVITRA

Luxury Residences

CLUSTER PLAN 3 BHK (CATEGORY 1)



Disclaimer: Dimensions are approximate and the furniture, fixtures and interior items shown inside the layout are not the part of standard fittings and chargeable.

3 & 2 BHK LUXURY RESIDENCES & SKY VILLAS

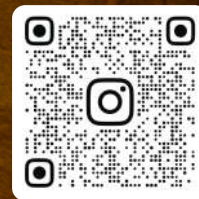
YOUR HAVEN AWAITS



PAVITRA
Luxury Residences

Disclaimer

This takeaway is purely conceptual and do not constitute a legally binding offer. All images are artist's impressions and not necessarily fully representative. In the interest of maintaining high standards, the contents herein, including all services, infrastructure, products, designs, amenities, facilities, site plans, layout plans, floor plans, areas, dimension, specifications, elevations, and perspectives views are tentative in nature and are subject to variations and modifications, without notice, till the final completion of the project, at the sole discretion of Competent, Statutory Authorities or the Company. Architectural features may differ in different apartments. All images are an artistic conceptualization and does not purport to replicate the exact products. Pavitra Luxury Residences is a government approved group housing project.



Near Radisson, Patiala Road,
Village Nabha, Zirakpur

www.pavitaluxuryresidences.com
9216925999, 9216926999